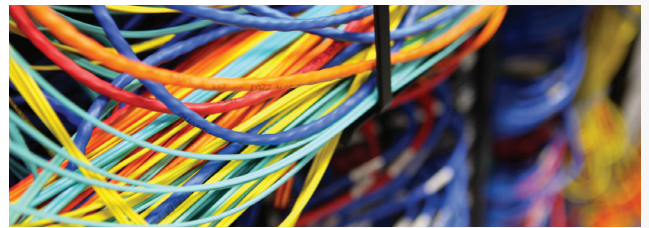


Nasdaq Express Connect

Nasdaq Express Connect is a low latency point-to-point network solution offering connectivity from the Nasdaq Data Center located in Carteret, NJ to major financial trading and co-location venues in New York, New Jersey, Chicago and Canada. By partnering with leading telecommunications providers, Nasdaq can provide significantly lower communications latency through a secure and competitively-priced network. All customers receive a guaranteed Service Level Agreement (SLA) and future latency improvement as routes and technology improve during the course of the contract.

BENEFITS /

- Low cost, high bandwidth connections
- Fast turn-up times
- Trusted telecommunications providers
- Low latency available for primary or redundant integral routes



CUTTING-EDGE TECHNOLOGY /

Express Connect network technology delivers dedicated bandwidth for point-to-point configurations that are effective in high-bandwidth, extreme performance and low latency scenarios, particularly trading and market data delivery.

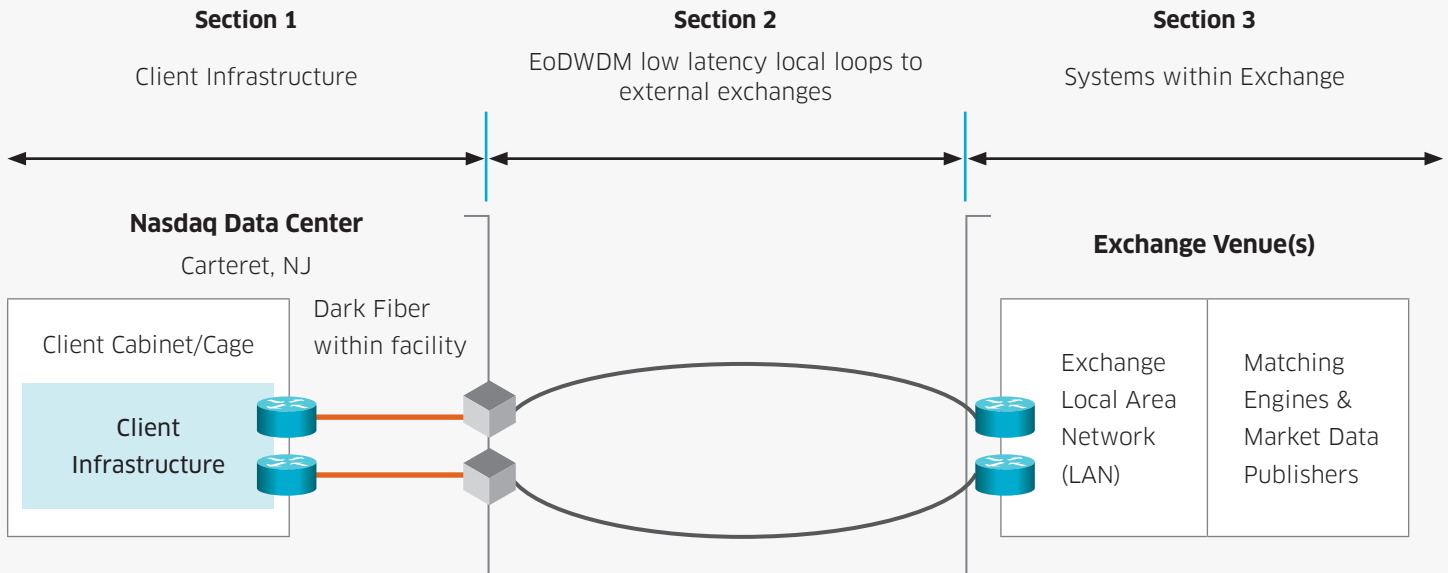
The 1G and 10G service is based on Ethernet over Dense Wavelength Division Multiplexing (EoDWDM) technology, providing the lowest latency solution next to dark fiber. Customers simply select from the options below and we provide the service and associated latency-based SLAs aligned to the venue and carrier chosen. Turnaround time is estimated to be 10 business days.

Connection Speeds



LATENCY /

Latency numbers within the SLAs are limited to Section 2 of the illustration below. The estimated latency of Section 2 below includes all equipment from the carrier demark within the Carteret facility to the carrier demark at the external financial venue.



VENUES /

New York Metro

- 755 Secaucus Road, Secaucus, NJ (BATS, Direct Edge, BOX, ISE, CBSX, C2)
- 275 Hartz Way, Secaucus, NJ (ICE POP and others)
- 300 Boulevard East, Weehawken, NJ (BATS)
- 165 Halsey Street, Newark, NJ (SFTI POP for access to NYSE, NYSE Arca, NYSE Amex and NMS in Mahwah)
- 777 Central Boulevard, Carlstadt, NJ (NSX, Pink Sheets)
- 100 Delawanna Avenue, Clifton, NJ (Direct Edge DR, ISE DR)
- 492 River Road, Nutley, NJ (BATS DR)
- 545 Washington Boulevard, Jersey City, NJ (Knight, HotSpot)
- 111 Eighth Avenue, New York, NY (SFTI POP for access to NYSE, NYSE Arca, NYSE Amex and NMS in Mahwah)

Chicago Metro

- 350 East Cermak Road, Chicago, IL (CME,ICE)
- 400 S. LaSalle Street, Chicago, IL (CHX)
- 440 S. LaSalle Street, Chicago, IL (CBOE,CFE)
- 2905 Diehl Road, Aurora, IL (CME)

Canada

- 3500 Steeles Avenue East, Markham, ON (TMX, TSX, TSVX)
- 151 Front Street, Toronto, ON (Omega ATS, Nasdaq CX)
- 130 King Street West, Toronto, ON (DR for TMX, TSX, TSVX)

Existing co-location customers may place orders using the colo console. Refer to the rate sheet for fees and latencies.

More Information

Email: richard.mitterando@nasdaq.com / Phone: + 1 212 401 8788

NASDAQTRADER.COM/COLO